





WHEELER YACHT COMPANY

The New Wheeler 38



The New Wheeler 38, constructed at the Brooklin Boat Yard in Brooklin, Maine, is a dimensionally-accurate copy of Hemingway's beloved Pilar, built by Wheeler Shipyard in 1934.

She has been reverse-engineered from historic documents retained by the Wheeler Family.



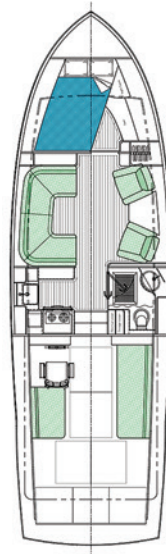
WHEELER YACHT COMPANY



THE NEW WHEELER 38 SPECIFICATIONS

BRIEF DESCRIPTIONS

Vessel Type.....Cold-molded wooden motor yacht
 Construction.....Cold-molded wood hull and superstructure
 Propulsion.....Twin Yanmar 370 HP Diesel engines (8LV370)
 Transmission.....Yanmar KMH50A 2.13:1
 Generator.....Cummins Onan 13.5 KW
 Interior.....Highest quality custom yacht grade, sleeps 4
 Materials.....All Douglas Fir, African Mahogany and Teak,
 high-quality marine grade plywood
 Hull Design.....Marek Yacht & Design
 Architecture.....Bill Prince Yacht Design
 Engineering.....Bill Prince Yacht Design
 Construction.....Brooklin Boat Yard, Inc.



PRINCIPAL CHARACTERISTICS

Length Overall.....39'4"
 Length on Design Waterline.....38'9"
 Beam.....12'0"
 Draft.....3'5"
 Displacement.....20,600 lbs.
 Fuel Capacity.....230 gallons
 Fresh Water Capacity.....72 gallons
 Black Water Capacity.....20 gallons
 Speed - Maximum at Half-Load Displacement.....34 mph
 Speed - Normal at Cruising RPM.....23 mph
 Cruising RPM.....2,600 rpm
 Range - at Cruising Speed300 miles

THERE IS PERHAPS NO BETTER SYNTHESIS
OF BOAT-BUILDING HISTORY AND
MODERN TECHNOLOGY THAN
THE NEW WHEELER 38.





THE NEW WHEELER 38 FEATURES

EQUIPMENT	BRAND	MODEL
Engines	Yanmar	370HP Diesel 8LV370
Generator	Cummins	Onan 13.5 KW
Gyro Stabilizer	SeaKeeper	3
Dynamic Trim Tabs	Zipwake	750S
Oil Change Pump	Reverso	43-2387
House Batteries	Victron	2x 220ah AGM
Battery Charger	ProMariner	ProNautic 40A
Alternator to Battery Charger	Sterling	
Charger/Invertor	Victron	Quatro
Tank Monitoring	Meratron	
Fridge/Freezer	Vitrifrigo	DRW 180A All-in-one
Induction Stove Top	Kenyon	SiIKEN 2 trimline
Microwave	GE	
Head	Thetford	Techna, auto
Stereo	Fusion	Apollo RA 770
Subwoofer	JL Audio	M6 10"
Amplifier	JL Audio	M700/5
Speakers	SolidDrive	SD-1
TV	Samsung	The Frame, 32" 4K UHD

EQUIPMENT	BRAND	MODEL
Air Conditioning Unit	Dometic	DTG16/DTG8
MFD	Garmin	GPSMAP 8612xsv
AutoPilot	Garmin	Reactor 40
Radar	Garmin	GMR Fanton 18
Depth Sounder	Garmin	B60 Transducer
VHF	Garmin	315 Black Box w/remote
Cellular Network	Peplink	Max BR1 mini
Air Horns	Kahlenberg	CH K-380 dual horn
Windlass	Lewmar	V-1 electric
Anchor	Lewmar Delta	35lb
Searchlight	DHR	180CB
Shore Power Reel	Glendenning	CRMA50 Cablemaster
Fire Supression System	Fireboy	ES-5000-02
Transom Shower	Scandvik	
Anchor Washdown	Aquajet	5.2
Gauges	VDO	A2C series
Water Heater	Whale	
Wipers	Roca	W12 2-speed

C-Zone digital switching lighting system

Custom leather chairs

Custom cast stainless accessories

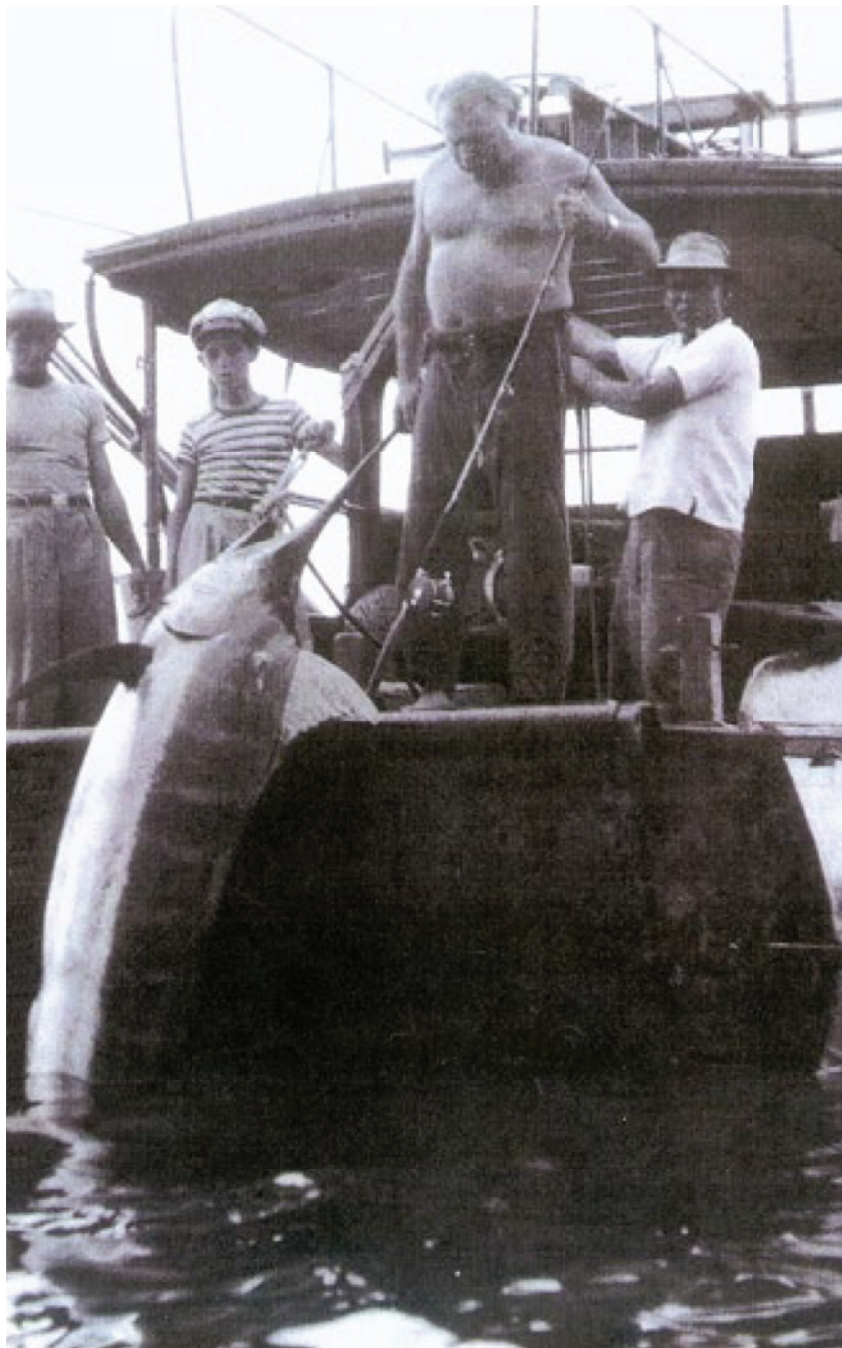




SARAA

PIAR

PIAR



The Legend of Pilar[®]

A PERFECT TRIFECTA FOR SPORT FISHING, THE SEA AND SOLACE

It is said that when Ernest Hemingway caught his first fish at the age of three, he became hooked for life. At 35, he entrusted Wheeler Shipyards to build his beloved “Pilar” — a customized 38-foot Wheeler Playmate named after his second wife.

A sportfishing innovator, Hemingway’s Pilar is believed to have had the very first flybridge and outriggers. With Hemingway at the helm, she rode out four hurricanes at sea and was the first boat to bring a giant tuna to Bimini’s docks undamaged by sharks.

Aboard Pilar, Hemingway wrote *The Old Man and the Sea* and *Islands in the Stream*, and patrolled the Atlantic for German U-Boats during World War II.

THE PILAR WAS A FITTING METAPHOR FOR HEMINGWAY’S LIFE—FULL OF ADVENTURE, PASSION AND A WELCOME PLACE OF SOLITUDE.



A PAST ANCHORED IN HISTORY

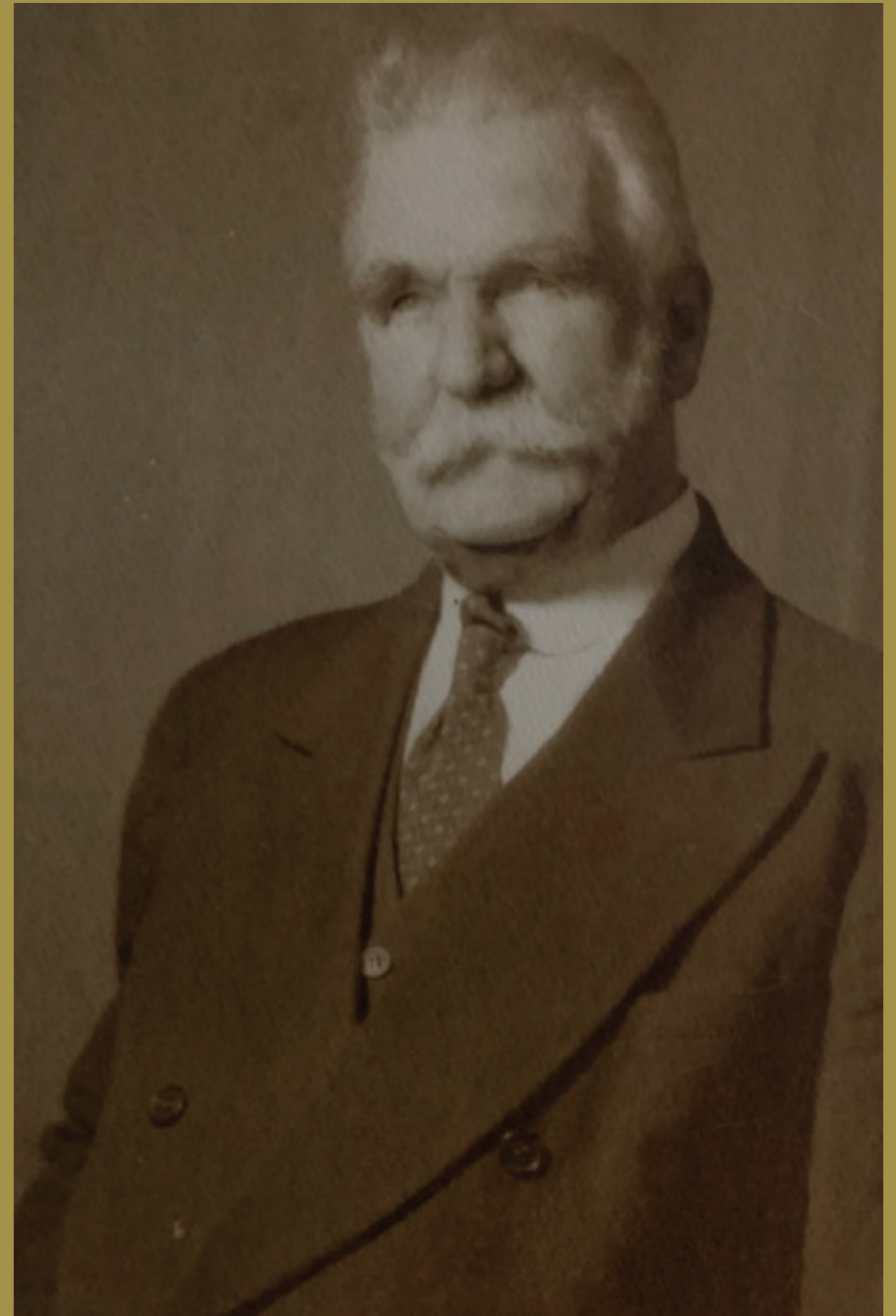
The Wheeler Story

Howard E. Wheeler Sr. founded The Wheeler Shipyard Corporation in 1910 in Brooklyn, New York to build high-quality, beautifully designed yachts. The yachts quickly earned a national reputation for their craftsmanship and gained an allegiant following.

During World War II, Wheeler also produced a fleet of ships for the Navy and Coast Guard to help defend America. By 1965 when the final vessel left the shipyard, Wheeler had built more than 3,500 hulls, many of which were sea-skiffs, motor cruisers and custom yachts.



The Wheelers: Eugene M., Howard E., Wesley L. and Robert C.



Cruising Forward to the Next Chapter

The Wheeler Yacht Company was reborn when a film about Ernest Hemingway's life was being produced. Filmmakers consulted with Wes Wheeler, Howard's great grandson, on the restoration of an actual 1934 Wheeler Playmate named 'Elhanor.' Upon seeing Elhanor in sea trials, Wheeler was inspired to build again.

The Wheeler family is thrilled to bring the 38' Playmate back to life using 21st century technology and production techniques. This modern-day heirloom will honor its predecessor's style, essence and original dimensions, while upgrading the vessel with modern engineering, equipment and a more powerful engine. As a tribute to the original boat, the new design will include the customizations that Hemingway made to his Playmate.





WHEELER YACHT COMPANY

CHAPEL HILL, NC 27517 919-240-7258

WHEELERYACHTS.COM